



# WHAT'S "WHISTLING" IN THE CARDINAL CLASS FOR FEBRUARY



## February Science Experiment



### Experiment: "Dissolving Candy Hearts"

We're excited to share a fun science activity happening in our classroom: the Dissolving Candy Hearts Experiment! The children will place Valentine Candy hearts into different solutions such as water, vinegar, lemon juice and soda and make a prediction. Which liquid "eats" the heart the fastest?



### Meet Letters Nn, Oo, Pp

The children will:

- Meet Noisy Newt, Oh Oh Octopus, and Polka Pig
- "Read" our Nn, Oo and Pp rhyme book and bring it home to "Read" to you!
- Print each letter in their individual handwriting books.
- Make pictures of things that start with the letters Nn, Oo, Pp in their picture dictionary books.



### Learning Numbers: 15 & 16

### Big Word of the Week

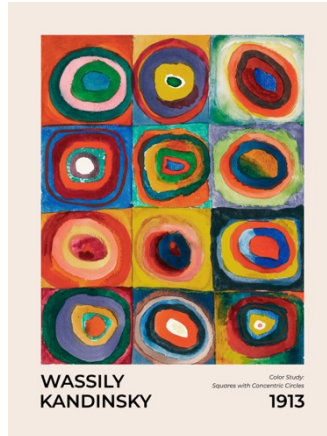
Nutritious: large amount of vitamins

Obstacles: a thing that blocks ones way

Pandemonium: wild uproar, chaos

## Artist of the Month: Wassily Kandinsky

An artist who loved bright colors, shapes and lines. He didn't always paint real things - he painted how music and feelings looked to him!



## President's Day

The children will learn all about President George Washington and Abraham Lincoln

## Valentine's Day

Valentine's Day is the perfect opportunity for you to explain to your child how our mail service works. A blank envelope will be sent home at the beginning of the month. Together with your child affix a stamp to the envelope we send home and write your family address on it (while your child is watching) (*The Smith Family, 18 Park Road Watchung, NJ 07069*) Send this back to the school in your child's folder the first week of February.

Your child will make a delightful Valentine Card in class, put it in the envelope and then walk to the mailbox with her or her class and mail it. What fun when the mailman delivers it to your house!

Your child's teacher will send home a list of the children's first names in his or her class. Please use this to help your child print your child's classmates' names on each individual Valentine card which he or she will place in each friend's individual Valentine bag.

